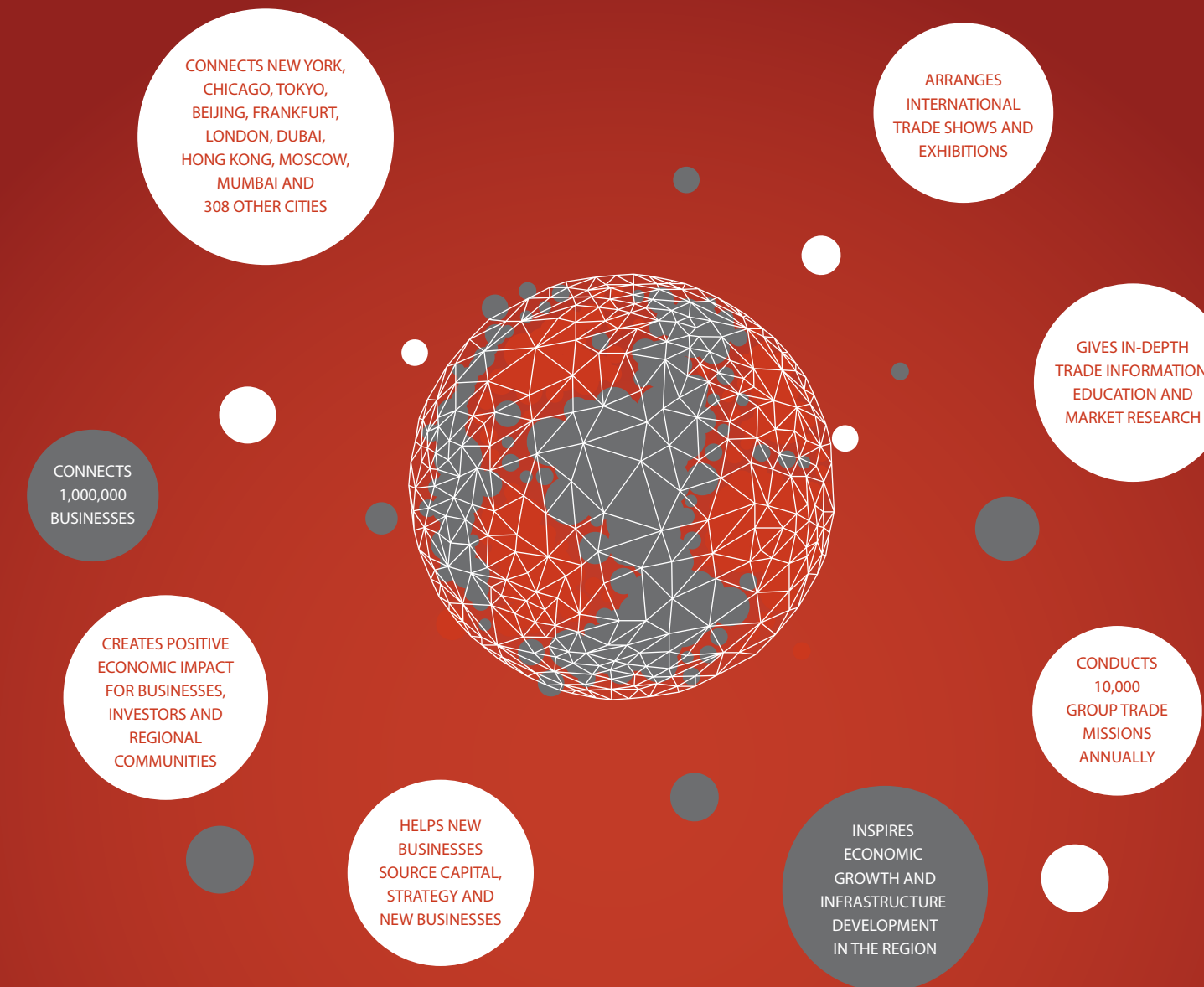


## WHERE WORK AND LIFE ARE SEPARATED BY WALLS. NOT MILES

Being in the same premise Quad enables people to walk directly to their office thereby reducing the time spent on commuting.

- ◆ Equipped with activities encouraging healthy lifestyle
- ◆ Situated amidst retail, leisure and entertainment hubs
- ◆ Landscaped central greens designed with outdoor leisure seating
- ◆ Multiple access points
- ◆ High ceiling allowing improved quality of space
- ◆ Naturally ventilated kitchen & toilets

## ONE GLOBAL NETWORK THAT



### JOIN THE LEAGUE



**WORLD TRADE CENTER™  
NOIDA**



www.redos.co.in

Corporate & Sales Office: GF-09, Plaza M6, District Centre, Jasola, New Delhi - 110 025  
Site Office: Plot No. TZ-13A&13B, Sector Tech Zone, Greater Noida Industrial Development Area, District Gautam Budh Nagar (U.P.)  
Tollfree : 18001 20 40 80 | E: info@thequad.co.in | W: www.wtcnoida.org | www.jointheleague.in

Developer- WTC Noida Development Company Private Limited; CIN : U70109DL2007PTC162288, Project: WTC Noida - Quad, RERA Registration No.- UPRERAPRJ3357

Source(s): www.wtca.org dated 03/05/2017

Disclaimer: World Trade Center, WTC and its map, design, logo presented herein are the registered trademarks of the 'World Trade Center Association, Inc, New York (WTCA). Spire Techpark Pvt. Ltd. - a group company, having its office at GF - 09, Plaza M-06, District Centre, Jasola, New Delhi-110025 has entered into a License Agreement with WTCA to use the name 'World Trade Center Noida', 'WTC Noida' alongwith the map, design and logo of WTCA.

General Disclaimer of Liability - The content published / printed herein are not any sort of invitation, legal offer or promise from the company. All representations / presentations made herein are for illustrative / indicative purpose and not claimed to be exhaustive or complete. All images are artistic impressions. Layout of the Project, Map / Design and shape of the building, nomenclatures of the Project, Blocks, Towers are tentatively mentioned herein and are subject to change as per guidelines issued by competent authorities. Please refer to the booking application and agreement of the project issued by the developer for detailed terms & conditions before making a decision of purchase. 1 sq. ft. = 0.093 sq. mtr.

Printed on: 20/02/18, Ref No: Quad Brochure\_001

Computer generated image

# QUAD

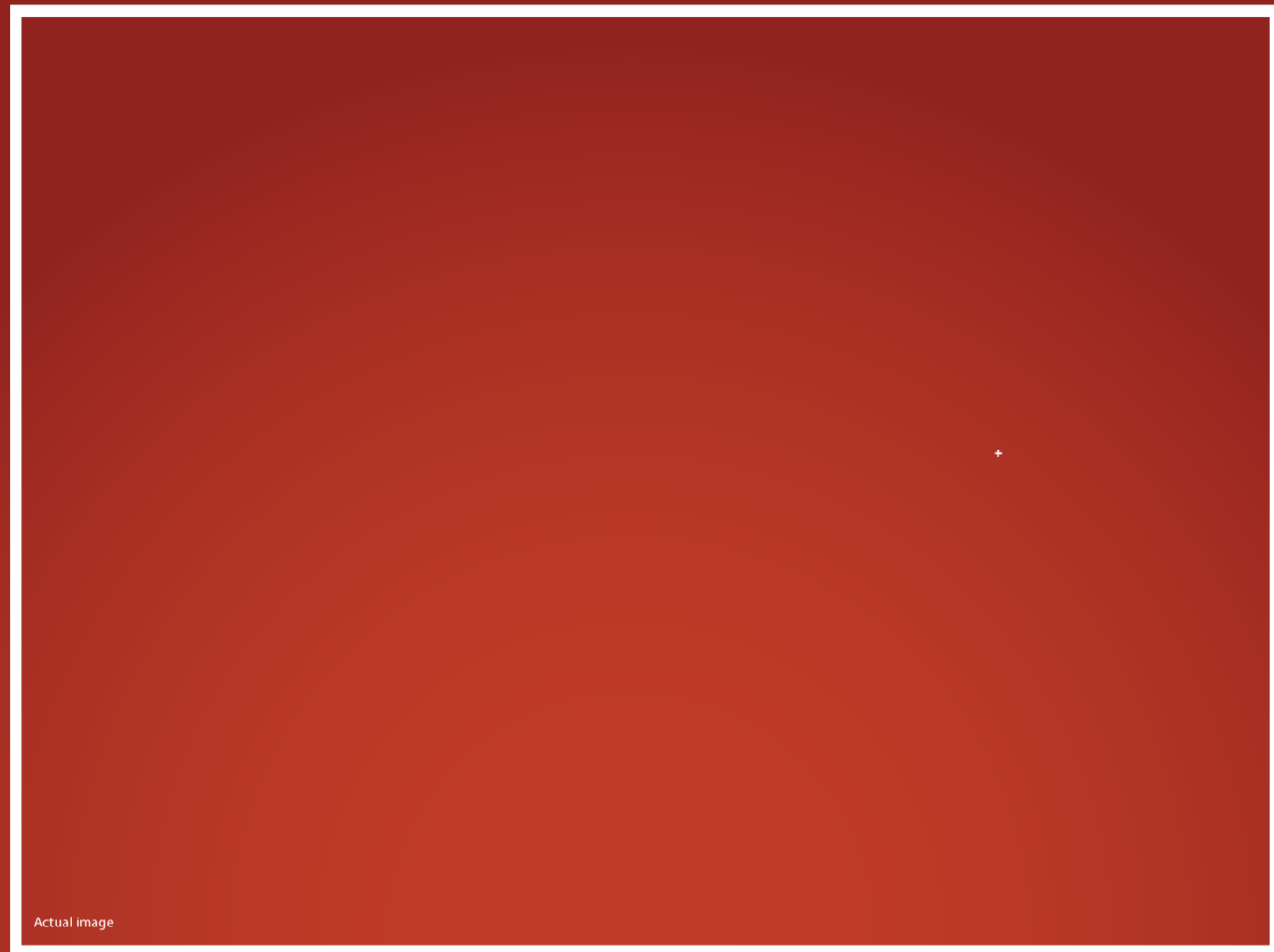
HOMES AT  
WORLD TRADE CENTER NOIDA



**WORLD TRADE CENTER™  
NOIDA**



www.redos.co.in



### AT THE CENTER OF DEMAND

The demand will outstrip supply with increasing number of business tenants.

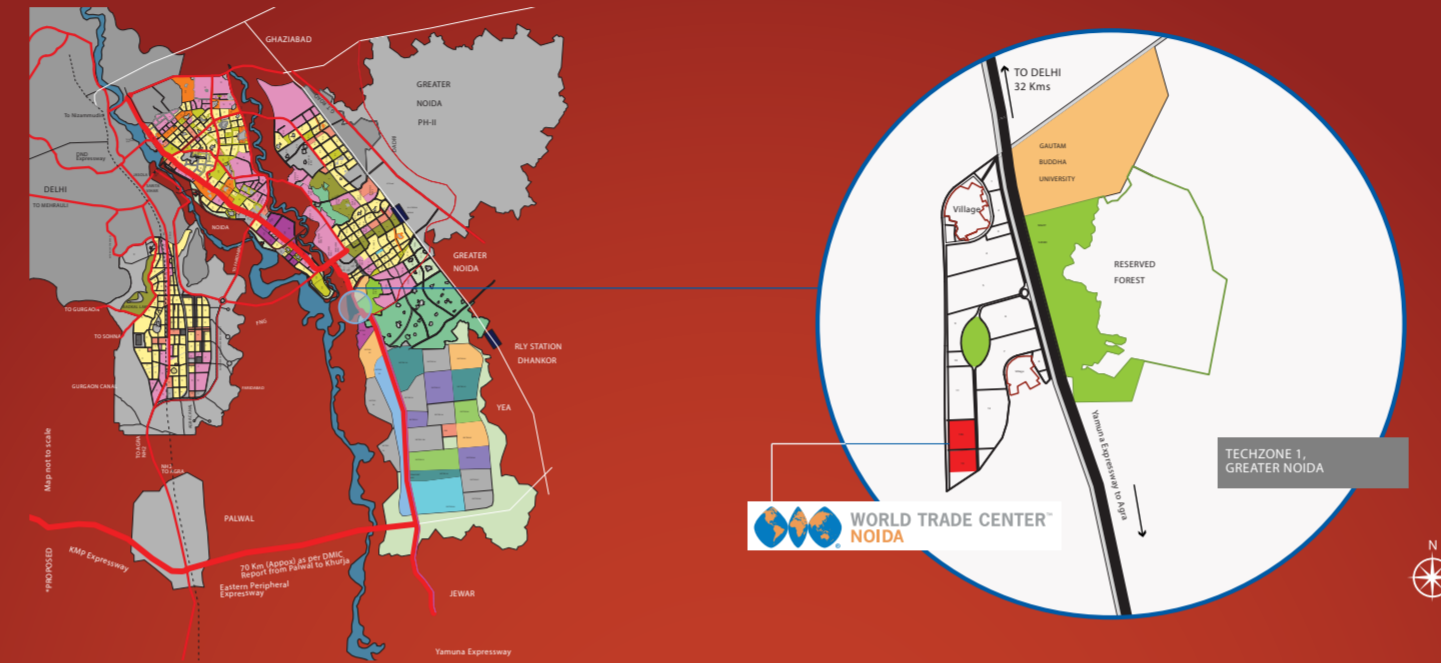
- Phase 1 delivered as promised and leased to VIVO
- 100% occupancy from day one~
- India's 3rd largest leasing deal\*
- 2,000+ people already working within the complex
- Expected footfall of 70,000+ people on completion\*

### HOMES DESIGNED TO GIVE BEST-IN-CLASS RETURNS THAT GET BETTER WITH TIME

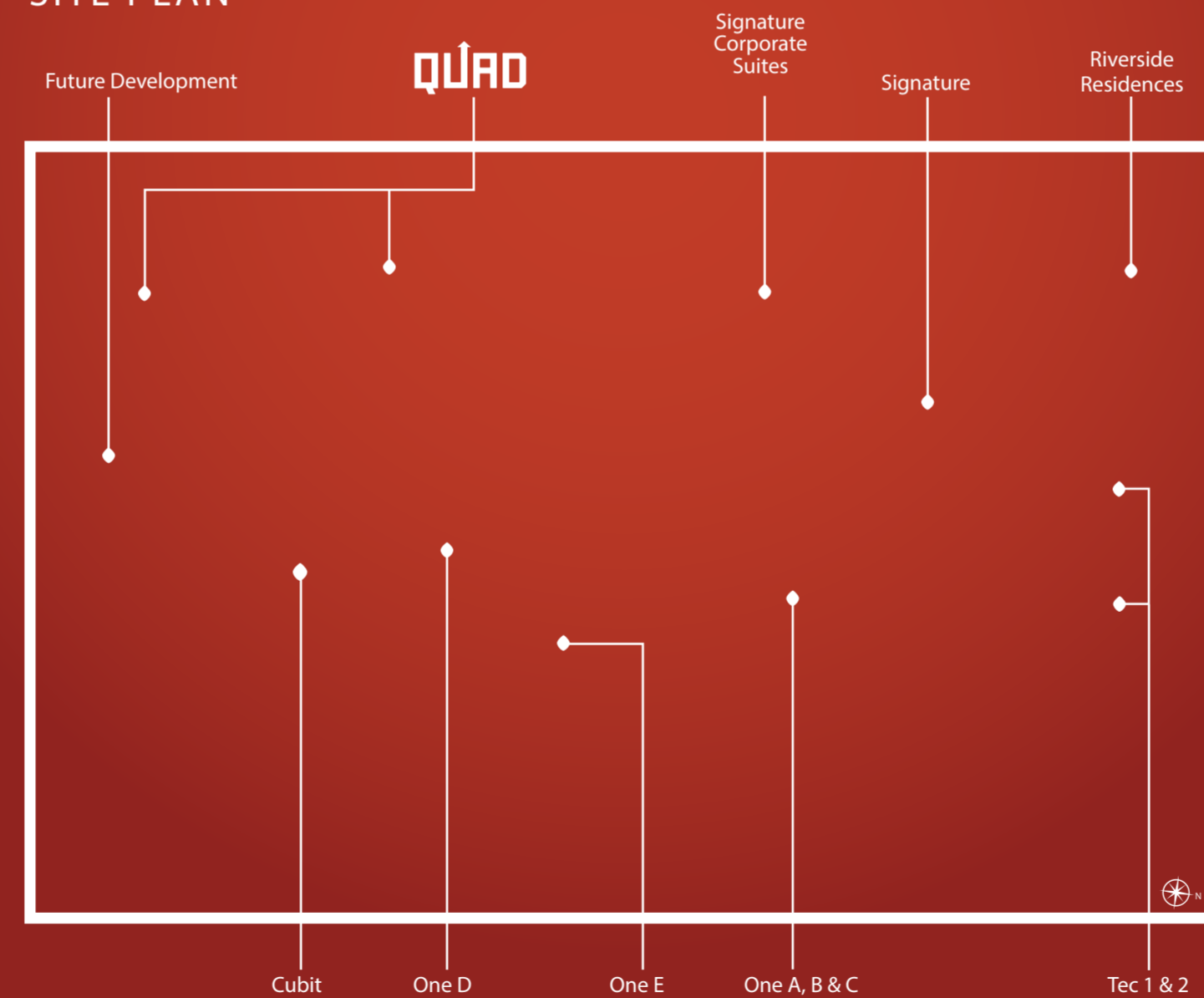
With unmatched rental returns, Quad is set to become a coveted address amongst investors across the country. And its location at the WTC Noida complex makes it one of the most sought-after opportunity by tenants in the vicinity.

### SITUATED AT GR.NOIDA: THE NEXT MEGA-CITY

- Noida is the emerging hub of IT/ITeS companies and SMEs • 3rd largest startup base in India
- Highest per capita income in NCR



### SITE PLAN



### WHERE ARCHITECTURE MEETS PERFORMANCE

Delivering international standards of functionality and design aesthetics.

Toilet  
5'-1"x7'-8"

Bedroom  
10'-2"x9'-11"

Living Room & Kitchen  
15'-7"x10'-2"

1 BHK UNITS 570 SQFT\*

Artistic Impression

\*Source: www.realty.economictimes.indiatimes.com, dated 22/07/2016. \*Assuming WTC Noida has 95% occupancy on completion and the footfall generated is a sum of the employees and the visitors. \*\* Phase - I that is Tec - I, Tec - II.

# Pocket

SMALL INVESTMENT WITH  
BIGGER PROSPECTS ●

**JUST ₹19.95 LAKH**

WITH POST - POSSESSION COMMITMENT OF  
₹10,000\* PER MONTH FOR 2 YEARS

\*Please refer to the booking application form for detailed terms and conditions.

## PAYMENT PLAN

### CONSTRUCTION LINKED PLAN

At time of submission of application form	Rs. 2 Lakhs
Within 30 days of booking	10% of the BSP less initial amount
Within 60 days of booking	15% of the BSP
Within 6 months of booking	15% of the BSP
On Casting of Plinth	15% of the BSP
On Casting of Second Floor slab	15% of BSP
On Casting of Fourth Floor slab	15% of BSP
On commencement of Internal Plaster	10% of BSP
On offer of possession	5% of BSP + IFMS+ other applicable charges + Stamp Duty +Registration charges

### TIME LINKED PLAN

At time of submission of application form	Rs. 2 Lakhs
Within 30 days of booking	10% of the BSP less initial amount
Within 60 days of booking	15% of the BSP less initial amount
Within 6 months of date of booking	15% of the BSP
Within expiry of every 6 months from the due date for payment of the second installment	7.5% of BSP x 6 (each respective installment)
On commencement of Internal Plaster	10% of BSP
On offer of possession	5% of BSP + IFMS+ other applicable charges + Stamp Duty +Registration charges

### DOWN PAYMENT PLAN (With 12% upfront discount)

At time of submission of application form	Rs. 2 Lakhs
Within 30 days of booking	10% of the BSP less initial amount
Within 60 days of booking	85% of the BSP
On offer of possession	5% of BSP + IFMS+ other applicable charges + Stamp Duty +Registration charges

### OTHER CHARGES (Quantified at Rs. 405/- per sq.ft. for the below mentioned\*)

EEC & FFE (Electrification Charges & Fire Fighting Equipment)  
Infrastructure Charges (Including Water & Sewerage Connection)  
Power Backup Installation Charges  
One Time Lease Rental including Admin. Charges

\* To be calculated on super area basis of Unit. Please refer to the booking application form for detailed terms and conditions.