

Unveiling the
X-Factor

 **ELITE - X**
Sector - X, Greater Noida West, Uttar Pradesh

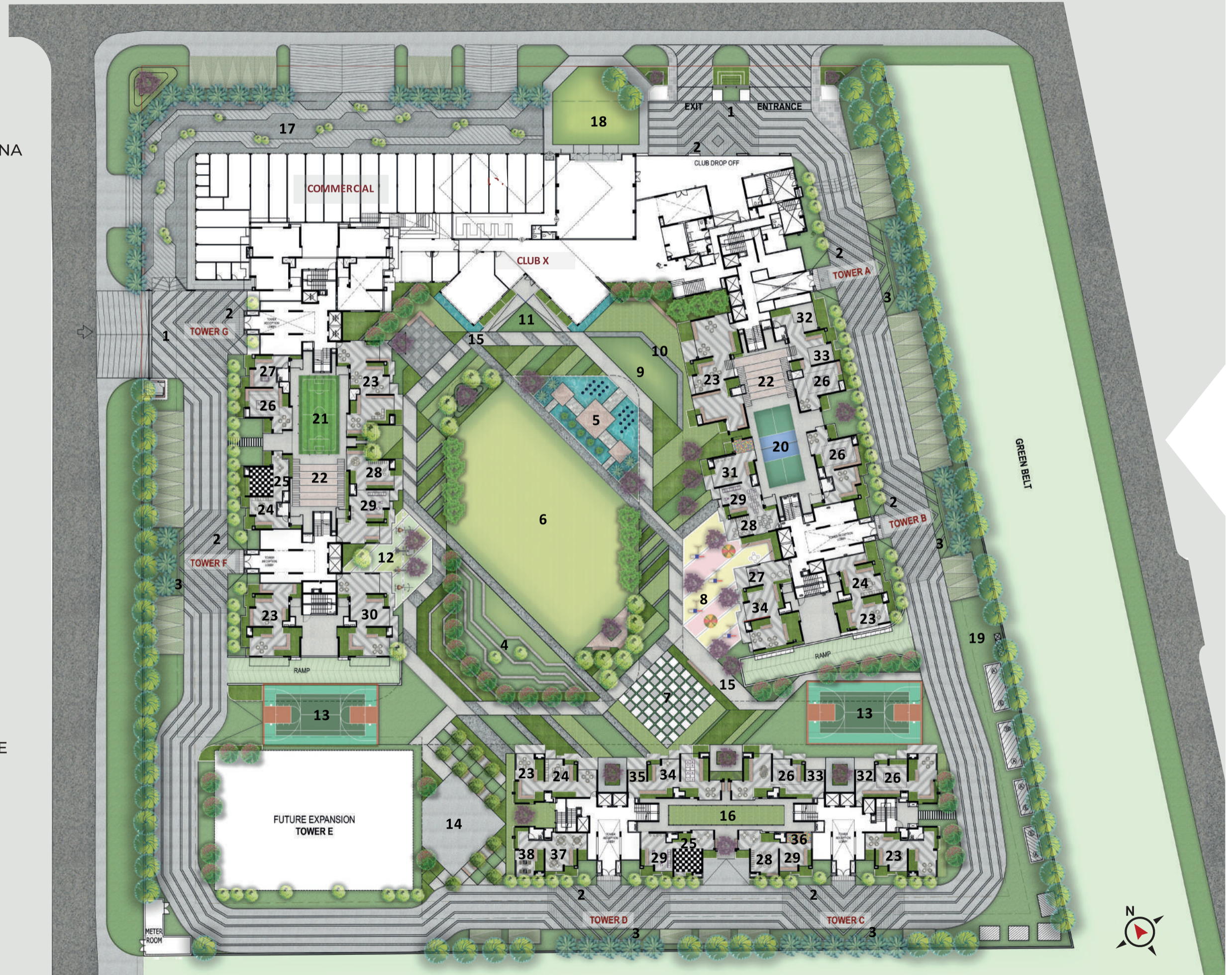


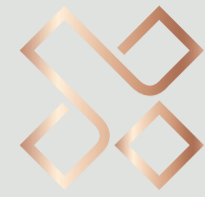
Your home with an oomph!



Master plan

- 1.. ARRIVAL COURT/ EXIT
2. DROP OFF
3. FEATURE WALL
4. AMPHITHEATRE
5. WATER FEATURE WITH CABANA
6. LAWN
7. CHESS COURT
8. KIDS PLAY
9. YOGA LAWN
10. REFLEXOLOGY PATH
11. SCULPTURE GARDEN
12. OPEN GYM
13. MULTIPURPOSE COURT
14. SKATING RINK
15. JOGGING TRACK
16. CRICKET PITCH
17. COMMERCIAL PLAZA
18. PARTY LAWN
19. PET PARK
20. BADMINTON COURT
21. MINI FOOTBALL
22. STEPPED SEATING
23. INDOOR SEATING
24. READING ZONE
25. CHESS COURT WITH SIT OUT
26. TABLE TENNIS
27. SOCCER TABLE WITH SIT OUT
28. BABY GYM
29. KIDS' EQUIPMENT
30. YOGA DECK/DANCE PRACTICE
31. INTERACTIVE WALL
32. MINI GOLF
33. FOOT POOL
34. WALL CLIMBING
35. SAND PIT
36. BALL POOL
37. CARROM/LUDO TABLE
38. CHESS TABLE





Master Plan with Club Terrace

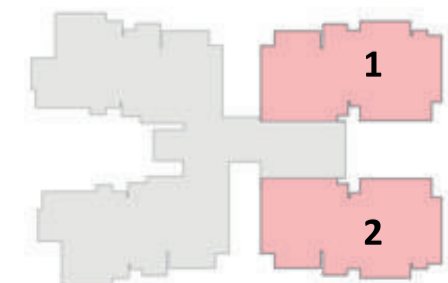
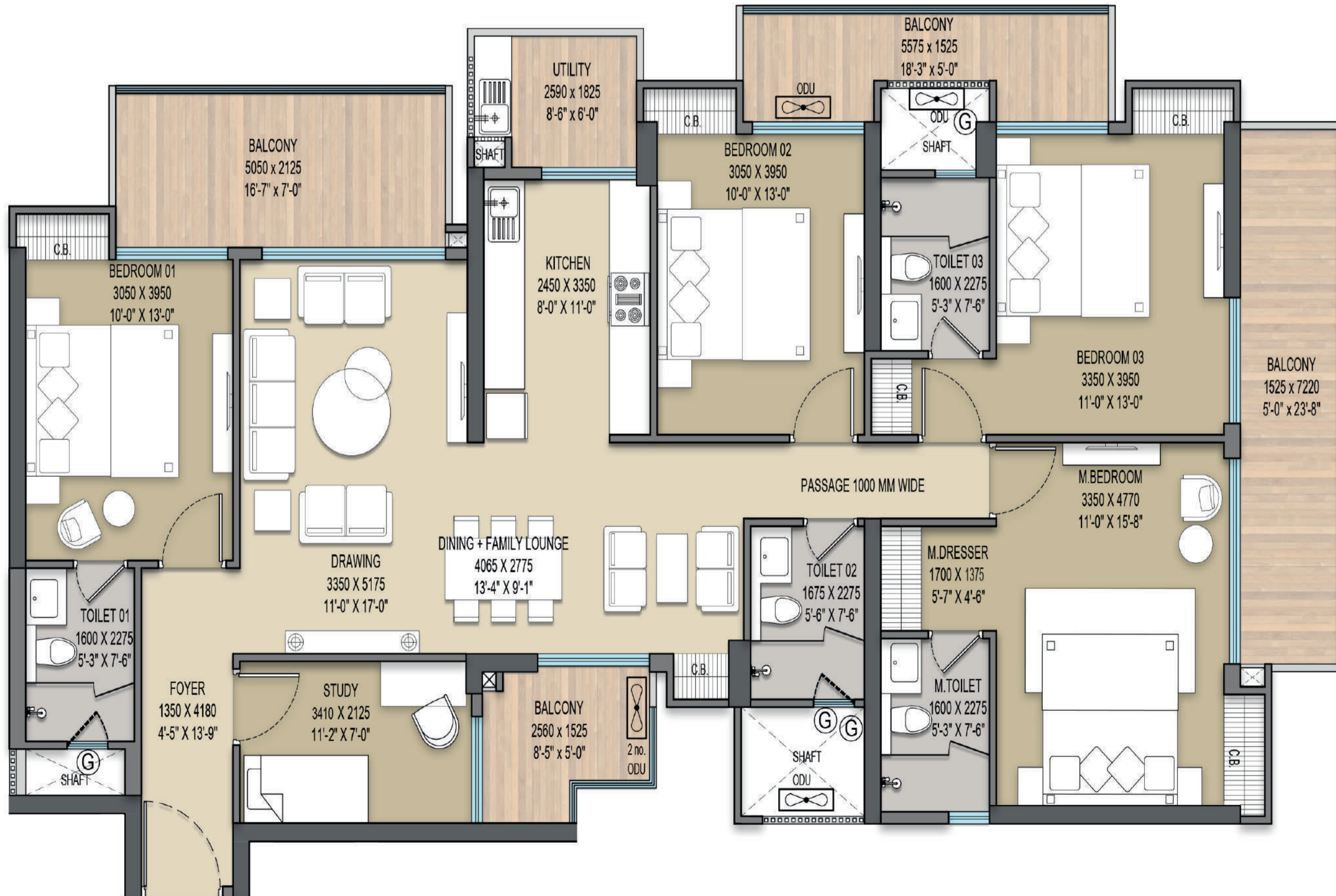




Tower A

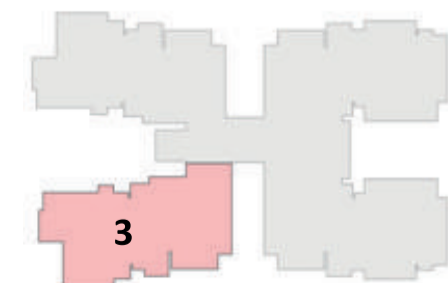
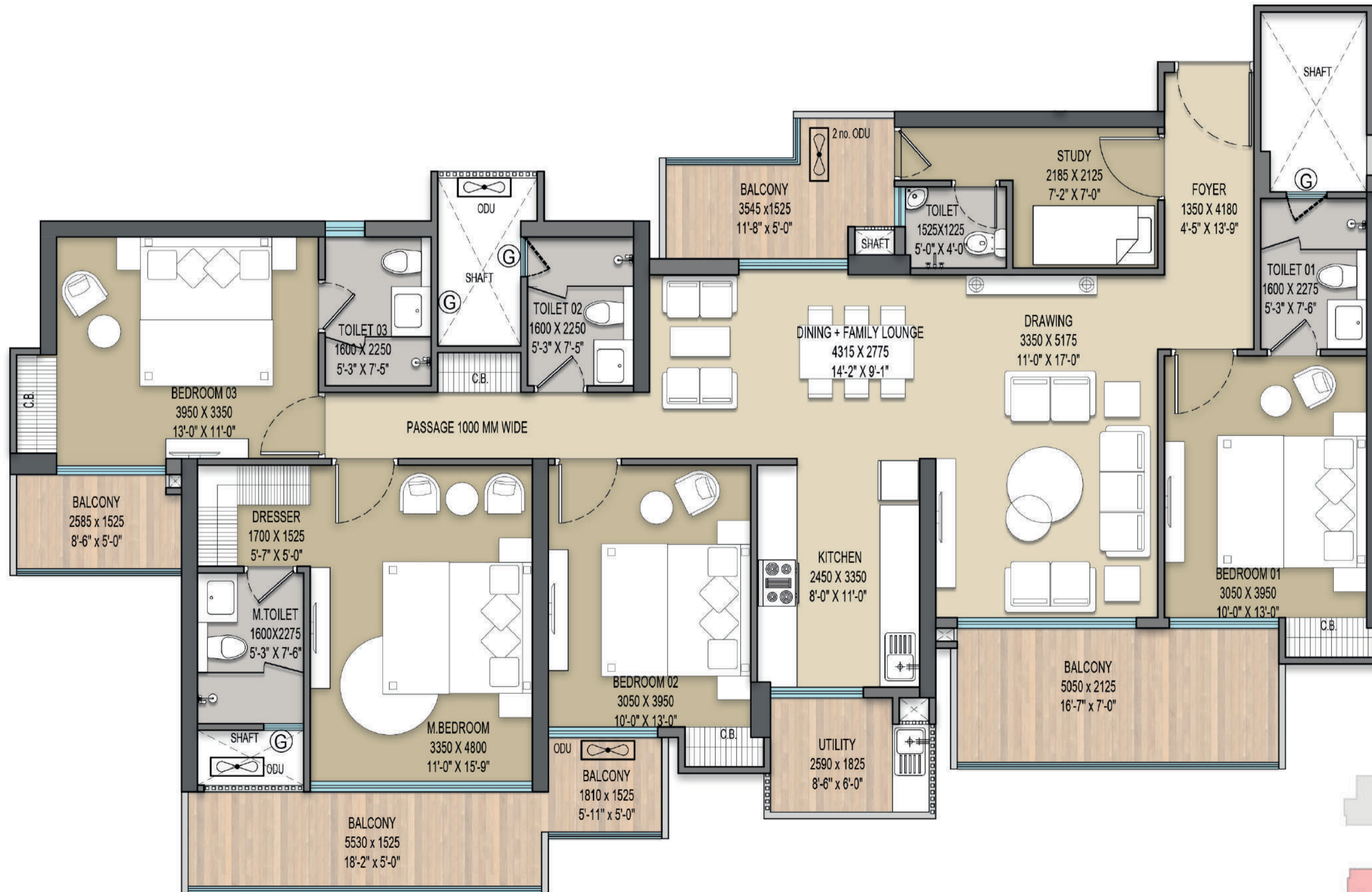
UNIT 1 & 2

Unit	Carpet Area	Built up Area	Super Area
1 & 2	1471.92 sqft	(2061.51 sqft)	(2638 sqft)
1 & 2	136.745 sqm	(191.519 sqm)	(245.076 sqm)



Tower A
UNIT 3

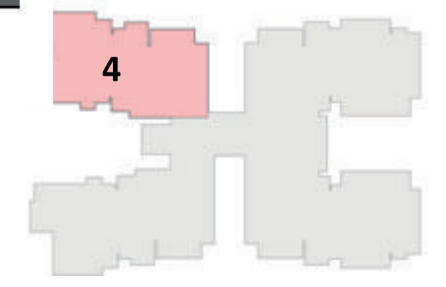
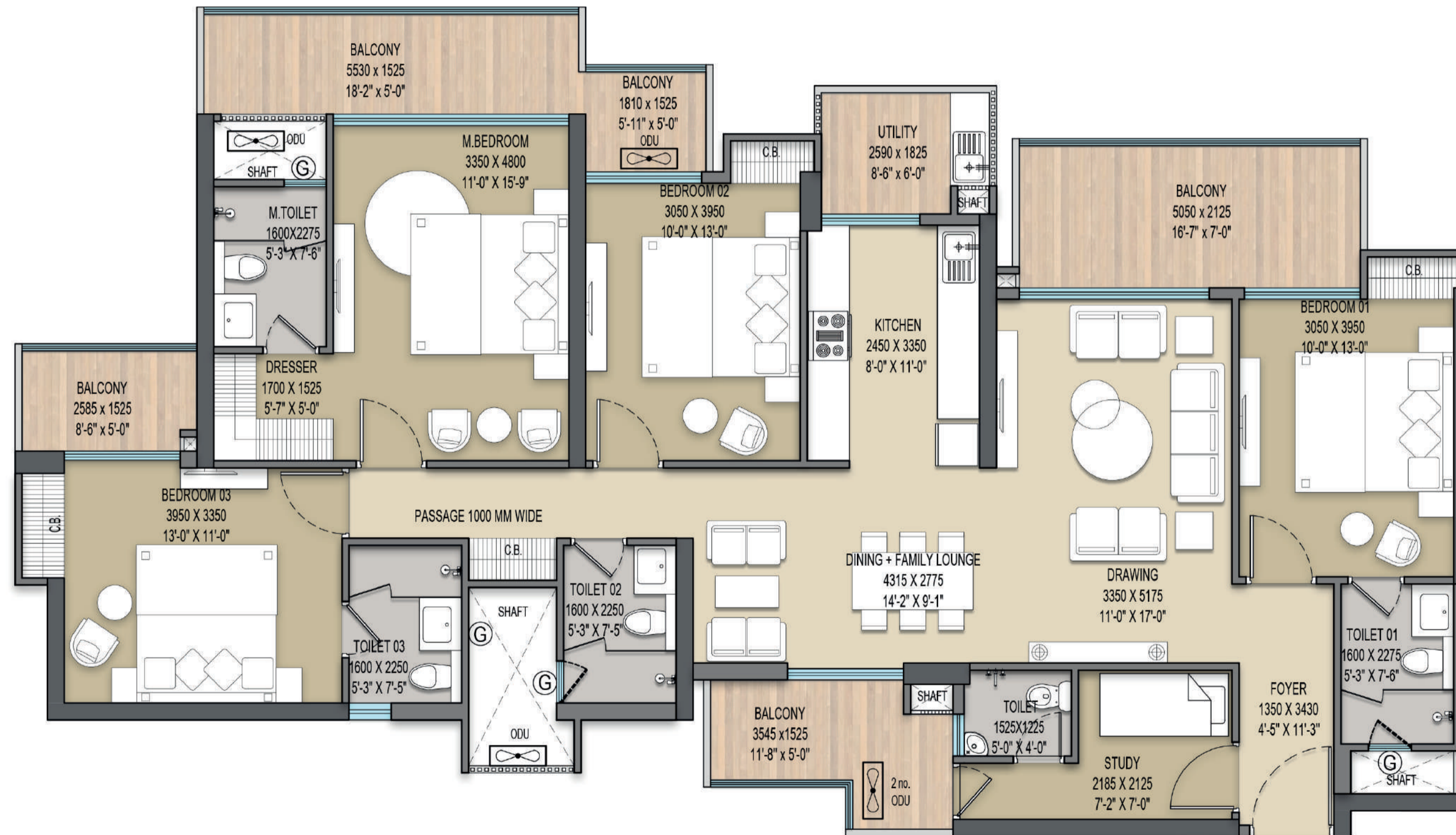
Unit	Carpet Area	Built up Area	Super Area
3	1471.33 sqft	(2066.47 sqft)	(2638 sqft)
3	136.690 sqm	(191.980 sqm)	(245.076 sqm)

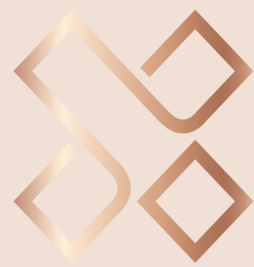




Tower A
UNIT 4

Unit	Carpet Area	Built up Area	Super Area
4	1460.42 sqft	(2056.08 sqft)	(2632 sqft)
4	135.677 sqm	(191.015 sqm)	(244.518 sqm)



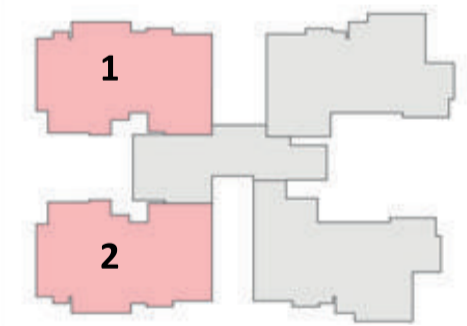
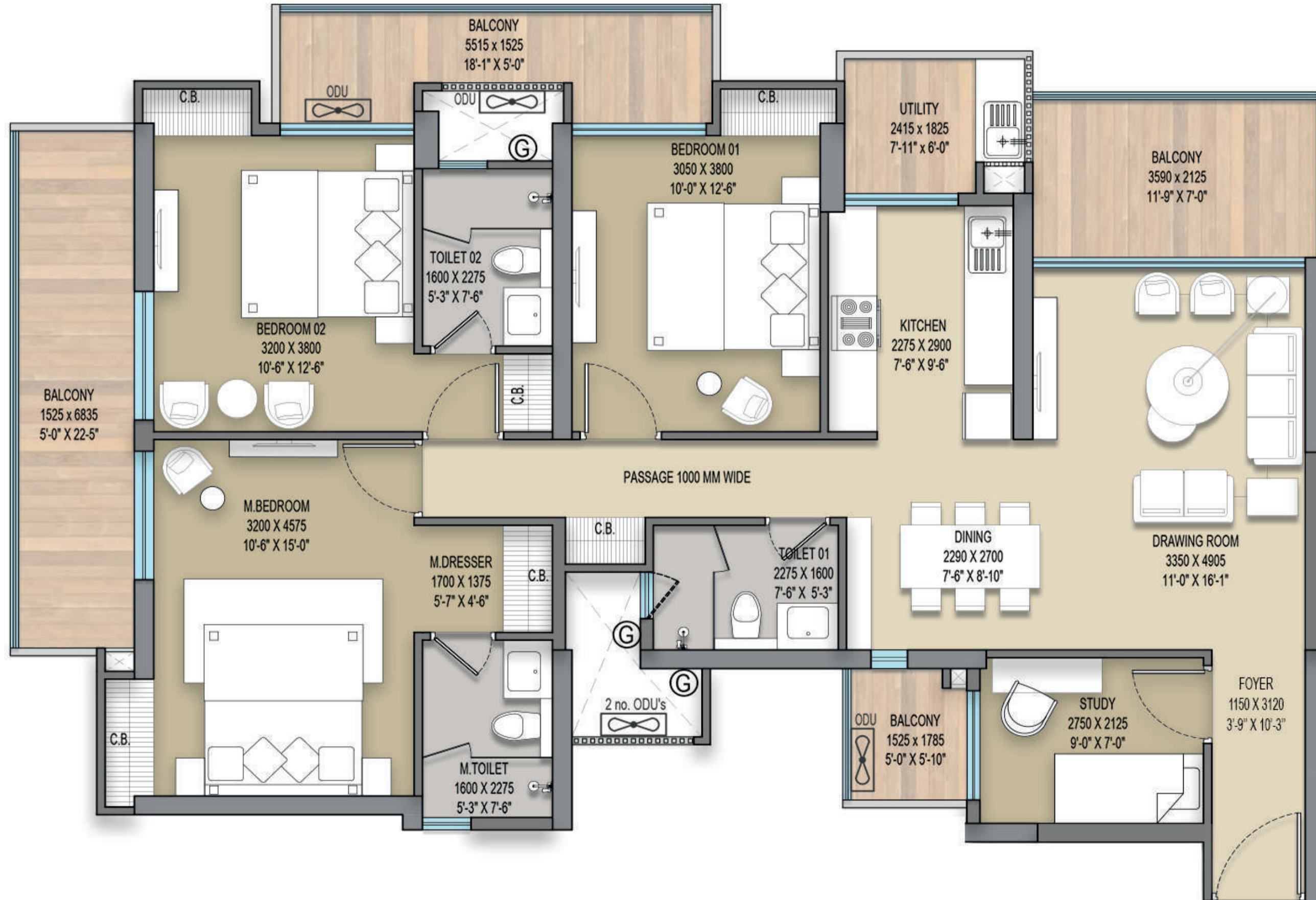


Tower B/G/F

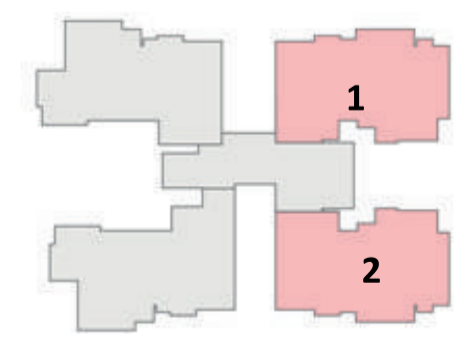
UNIT 1 & UNIT 2

Unit	Carpet Area	Built up Area	Super Area
1	1138.099 sqft	(1644.77 sqft)	(2110 sqft)
1	105.732 sqm	(152.803 sqm)	(196.023 sqm)

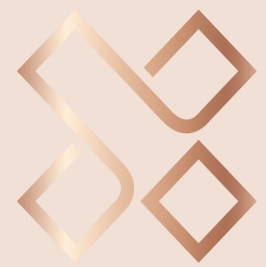
Unit	Carpet Area	Built up Area	Super Area
2	1138.099 sqft	(1647.20 sqft)	(2110 sqft)
2	105.732 sqm	(153.029 sqm)	(196.023 sqm)



TOWER B & G



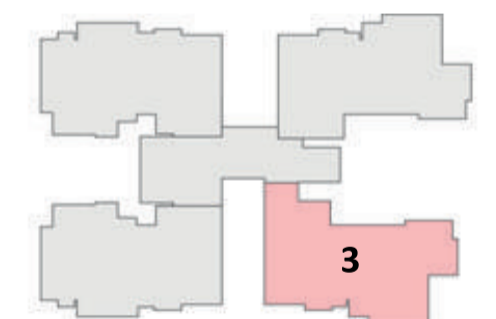
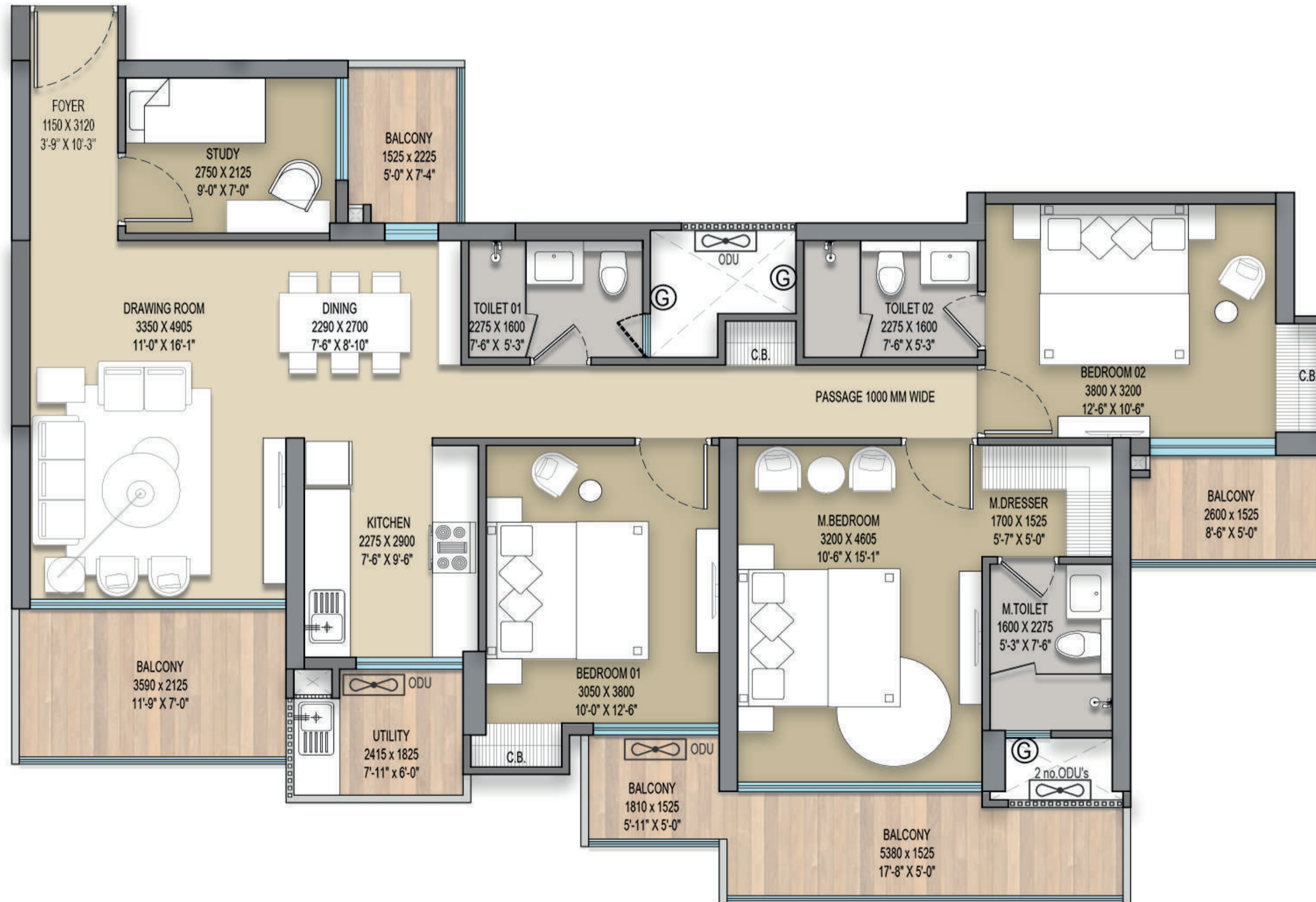
TOWER F



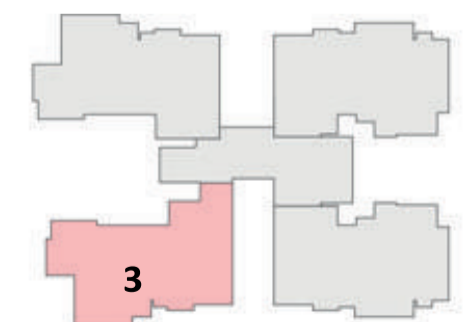
Tower B/G/F

UNIT 3

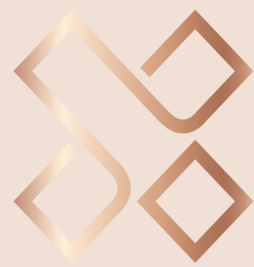
Unit	Carpet Area	Built up Area	Super Area
3	1125.70 sqft	(1609.59 sqft)	(2090 sqft)
3	104.580 sqm	(149.535 sqm)	(194.160 sqm)



TOWER B & C



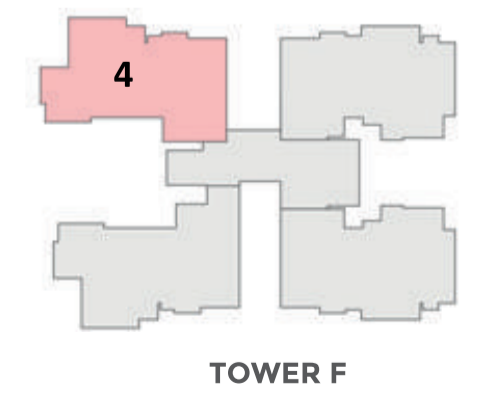
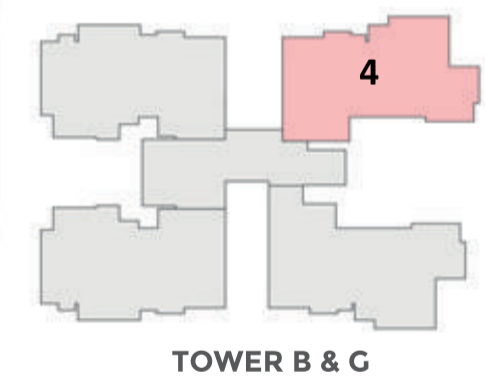
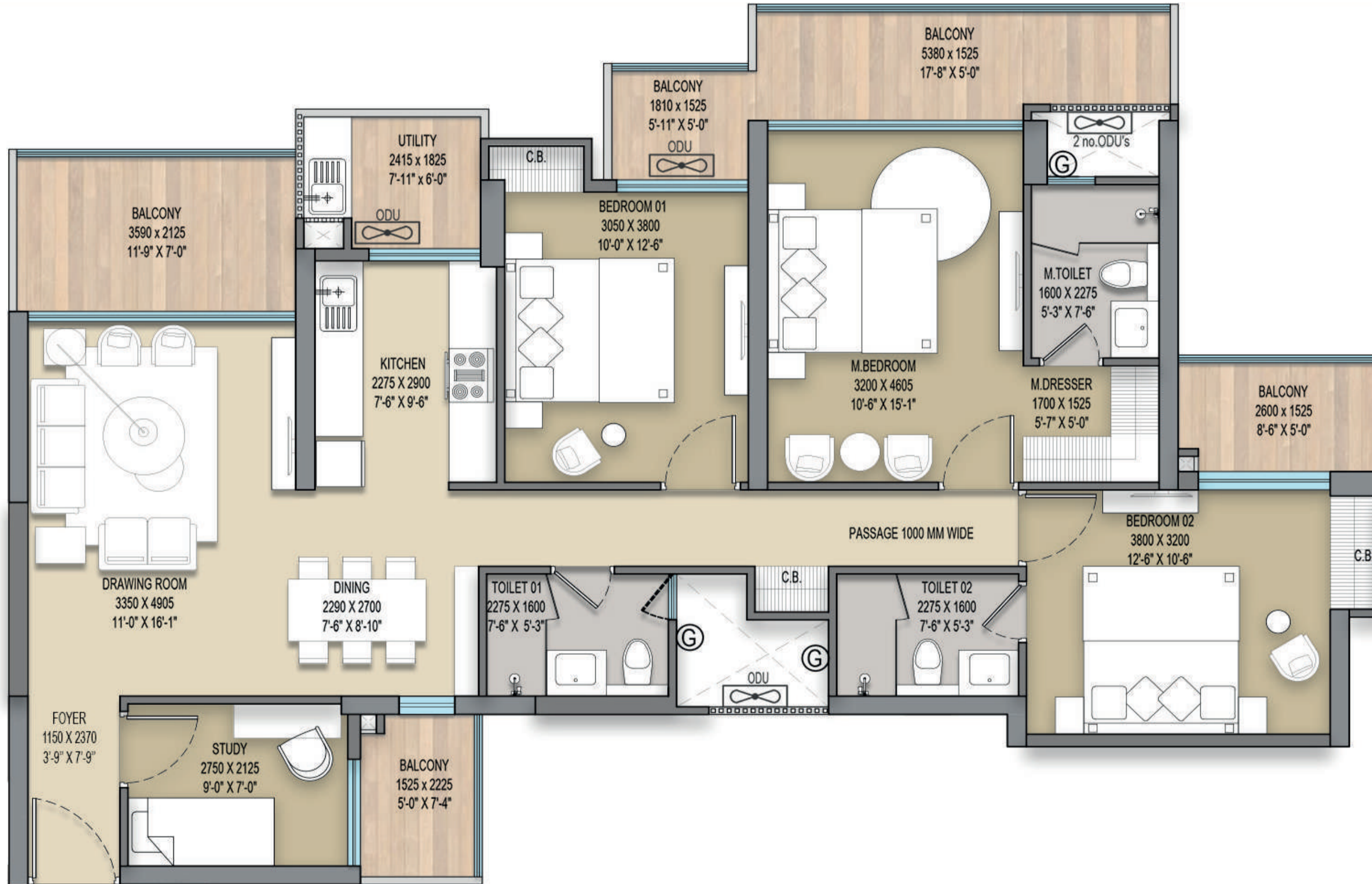
TOWER F

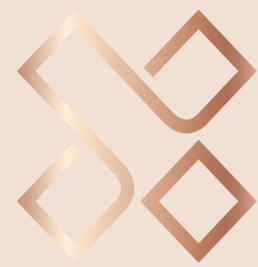


Tower B/G/F

UNIT 4

Unit	Carpet Area	Built up Area	Super Area
4	1116.40 sqft	(1597.48 sqft)	(2075 sqft)
4	103.717 sqm	(148.410 sqm)	(192.77 sqm)

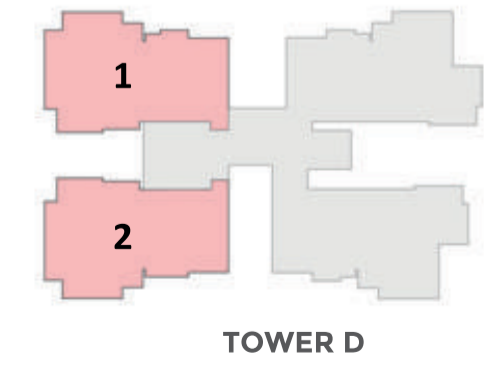
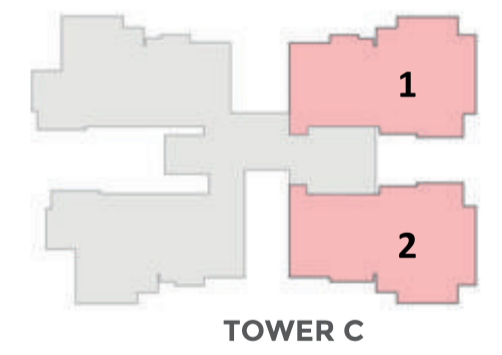
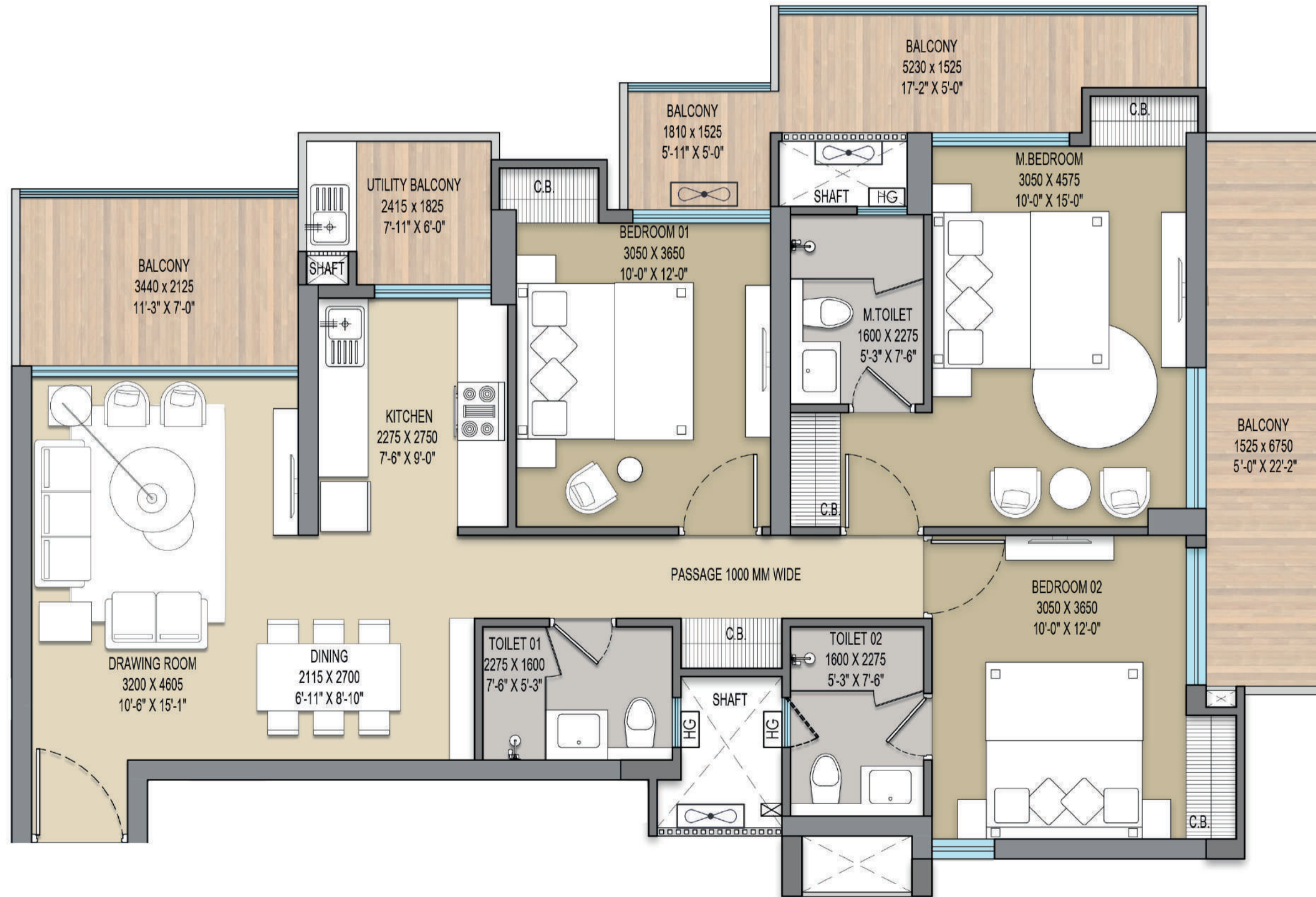


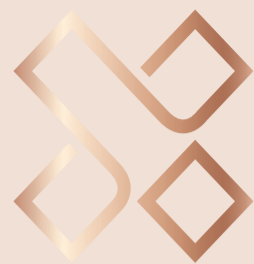


Tower C/D

UNIT 1 & 2

Unit	Carpet Area	Built up Area	Super Area
1 & 2	971.34 sqft	(1453.40 sqft)	(1860 sqft)
1 & 2	90.240 sqm	(135.025 sqm)	(172.79 sqm)

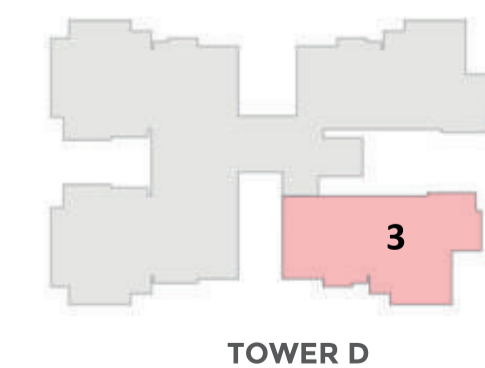
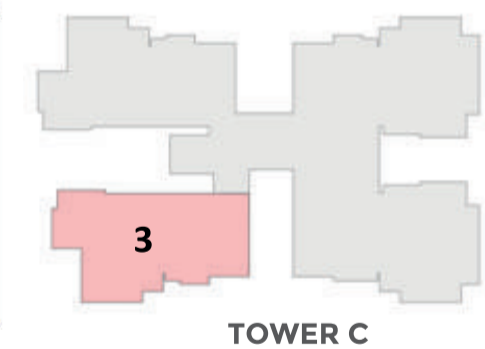
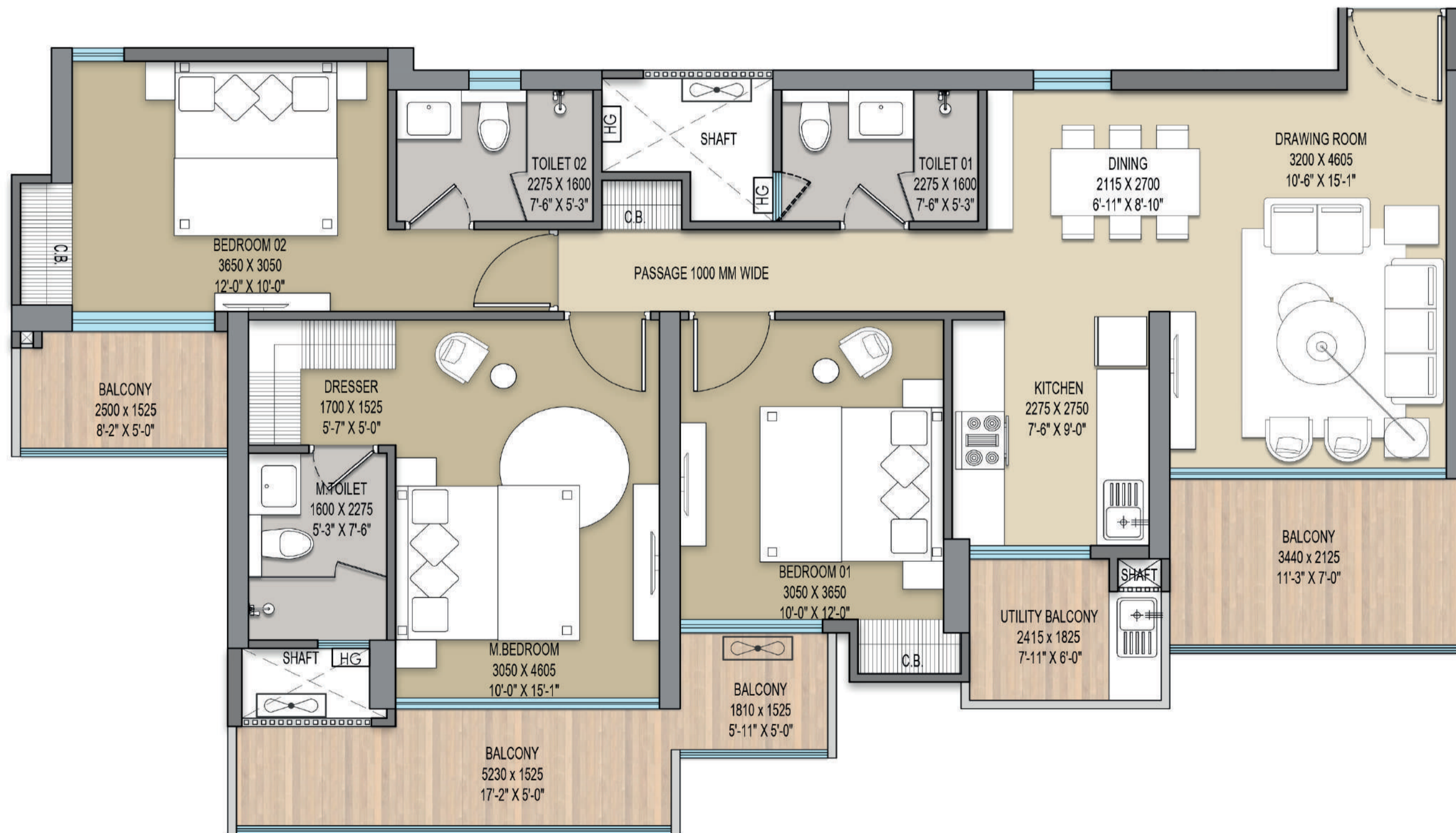


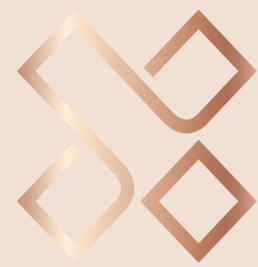


Tower C/D

UNIT 3

Unit	Carpet Area	Built up Area	Super Area
3	977.75 sqft	(1408.03 sqft)	(1812 sqft)
3	90.835 sqm	(130.810 sqm)	(168.33 sqm)

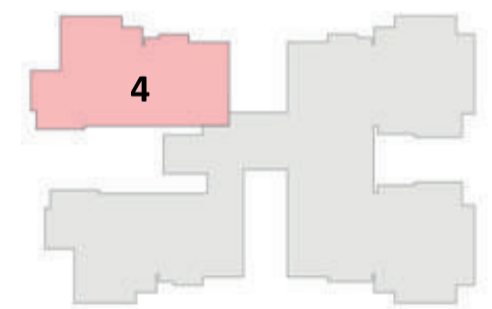
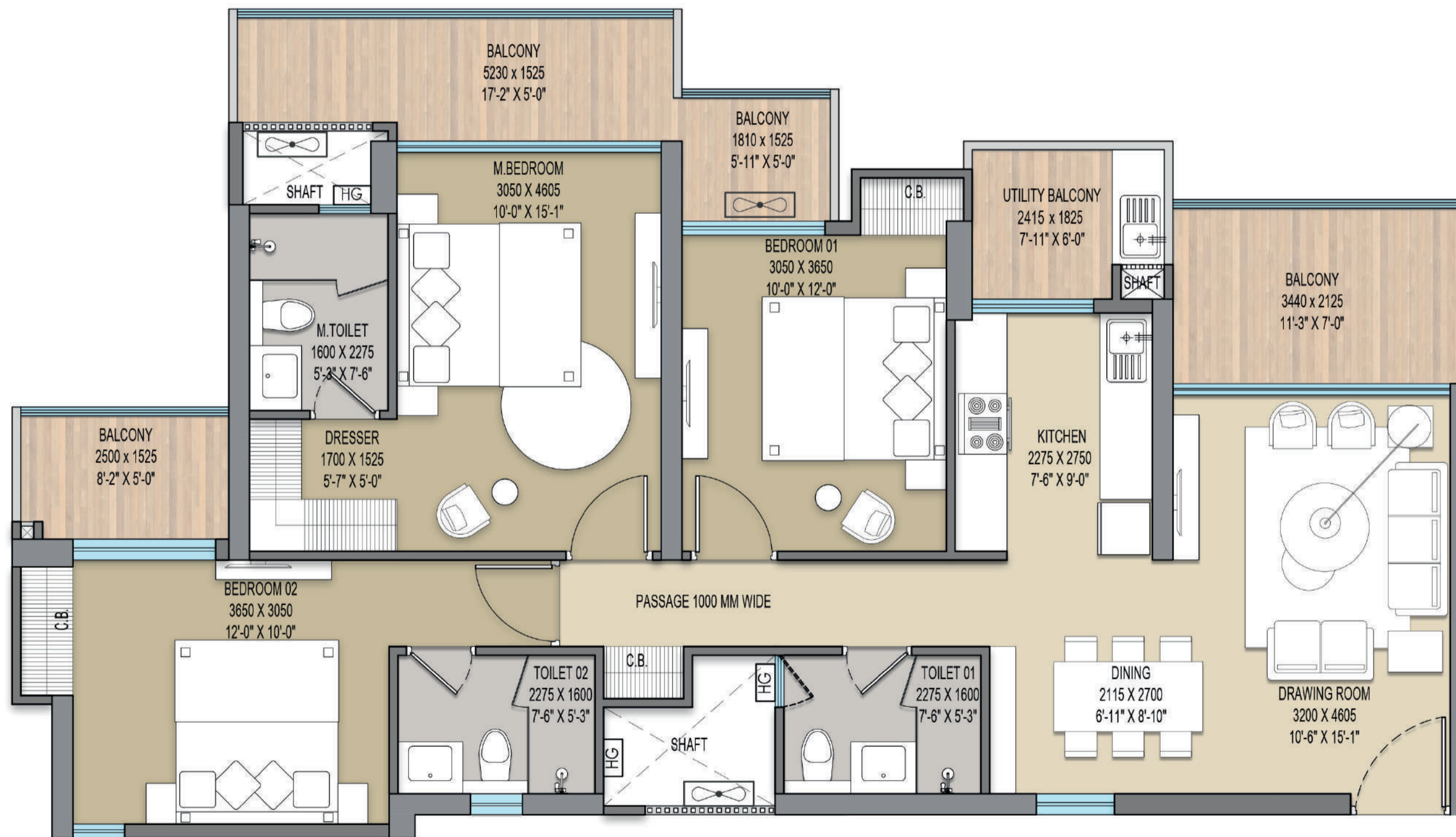




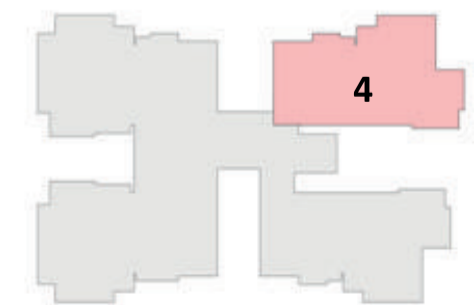
Tower C/D

UNIT 4

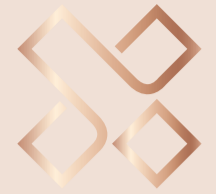
Unit	Carpet Area	Built up Area	Super Area
4	968.43 sqft	(1397.38 sqft)	(1800 sqft)
4	89.970 sqm	(129.820 sqm)	(167.22 sqm)



TOWER C



TOWER D



Specifications

Completed Projects

Structure	Earthquake Resistant RCC Framed Structure (with latest Seismic Code) by experienced engineers & approved by IIT or equivalent authorities.
Flooring	Drawing/Dinning & all bedroom with Vitrified Tiles, Anti skid - Ceramic Tiles in kitchen, toilet & balcony. All staircase and common landing to be of Marble/Kota Stone/Tiles.
Wall Finish	POP in all Drawing/Dining, bedroom & kitchen. All internal walls of the room and drawing dining will be painted using O.B.D. Master bedroom one wall with wall paper finish.
Exterior	Most modern and elegant permanent finish with high quality paint.
Sanitary Work	For internal Piping - Corrosion free PPR/UPVC Pipes & Fittings.
Toilet	Provision for hot & cold water. Glazed Tiles in pleasing colours on wall upto door level. European W.C. of reputed brands with white shade. All taps and fittings of reputed brands in C.P. E-board false ceiling. Vanity for all toilets, wash basin in study / servant room.
Kitchen	Granite working platform, 2 ft. high glazed ceramic tiles, stainless steel sink, independent R.O. system and provision of utility balcony with electric point for washing machine.
Electrical	Fire resistant copper wiring in concealed PVC conduits modular switches & sockets in adequate numbers. Telephone outlets will be provided in drawing/dining. Provision of TV outlets in all rooms.
Door & Window	Entrance Door – 8' high polished hard wood frame, laminated flush door. Internal Door – 7'6" high polished hard wood frame, Laminated flush door. External Sliding Door – 7'6" UPVC/Powder Coated Aluminum. Kitchen Door & Window - Aluminum composite powder coated with anodized aluminum hardware. Toilet Window - Aluminum composite powder coated with anodized aluminum hardware along with additional one wire mesh panel in Toilets.
Fixture & Fittings	LED lights in drawing/dining and all bedrooms. Provision for Audio phone system with intercom facility for security.
Water Supply	Underground & over head water tank for adequate water supply.
Power Back UP	100% DG Power Back Up for all the common areas.

*The above specifications and amenities are tentative and may be changed or modified at the sole discretion of the Developer and / or for technical reasons.

30,88,944+ sqft
Areas Constructed

35+ Years
Experience

2100+
Units Sold



Elite Homz, sector 77



Elite Golfgreens, sector 79

About Developer



ELITE GROUP is one of the leading real estate developers in the land of NCR.

Elite Group was born in July 2010 with Flagship Company as HR Oracle Developers Pvt. Ltd. which was a SPV between HR Buildcon Pvt Ltd. and Oracle Real Tech Pvt Ltd. Both these companies have been in real estate sector from quite last 35 years.

Redefining urban living in NCR through innovative and sustainable construction. With a commitment to quality, community, and the environment, we create exceptional housing that elevates lifestyles and enriches neighbourhoods, such as Noida & Greater Noida. Fueled by architectural excellence and modern understanding, we design spaces that foster well-being and connectivity. Embracing technology and safety, we exceed expectations, leaving symbols of progress. Transparency, local collaboration, and co-consciousness define our ecological efforts. We inspire industry-wide sustainable practices, envisioning vibrant, harmonious communities. Our foundation - integrity, professionalism, relentless excellence. We craft living spaces that embody dreams and promise a brighter tomorrow.



Disclaimer: The imagery presented is for representative purposes only and may not accurately reflect the final product or exact details. Actual features, specifications, and designs may vary. Please refer to official documentation and materials for precise information.



ELITE GROUP
Golfgreen Mansions Pvt. Ltd.

Corporate
H-58, Sector-63, Noida (UP) India 201301
Phone 0120-4566000
Email info@elitegroup.co
Web www.elitegroup.co



Visit our website



Scan for location

Site
GH-03A, Sector-10, Greater Noida
West (UP) 203207

UP Rera Registration No.
UPRERAPRJ916631/02/2024

Sales enquiry
 **+91 92133 31222**



IGBC GREEN BUILDING CERTIFIED

Disclaimer:
All plans, specifications, artistic renderings shown in the brochure are only indicative and are subject to change as may be decided by the company or directed by any competent authority in the best interests of the development. This document is conceptual and not a legal offering by the company and is to be used for general information only. The user of the brochure confirms that they have not solely relied on this information for making any booking / purchase in any of the towers. 1 Sqm = 10.764 sq.ft / 304.8mm = 1'-0".