



**OASIS**   
**GrandStand**

*2,3,4 BHK & Penthouse, Yamuna Expressway*

**FLAG OFF THE NEW HEIGHT OF LUXURY**



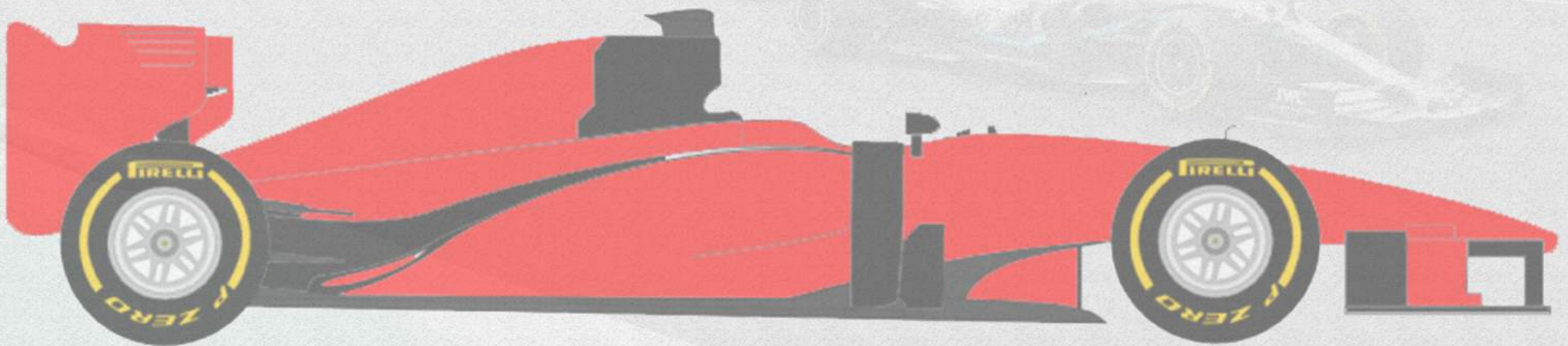
**OASIS**  
**GrandStand**

*2,3,4 BHK & Penthouse, Yamuna Expressway*

## REV UP FOR AN ENGAGING EXPERIENCE

Motorsport is as much about thrill and excitement as it is about meticulous planning, skillful decision making and perfect execution. Oasis Grandstand embodies these every nuances to the core.

Located on the Yamuna Expressway in Greater Noida, an emerging destination and the hottest real estate hub in Delhi NCR, Oasis Grandstand brings to life the thrilling theme of racing, blended seamlessly with state-of-the-art construction engineering, thoughtful architecture, elegant interiors, delightful exteriors and an overwhelmingly zippy ambiance.



# OASIS GrandStand

2,3,4 BHK & Penthouse, Yamuna Expressway





**OASIS**  
**GrandStand**

2,3,4 BHK & Penthouse, Yamuna Expressway

## SPACE OF YOUR CHOICE

### CAESARS TOWER

Unit No: 1/6

Size: 1405 sqft

Unit No: 2/3/4/5

Size: 1045 sqft

### DETROIT TOWER

Unit No: 1/2/3/4

Size: 1045 sqft

### VALENCIA TOWER

Unit No: 5/6

Size: 1405 sqft

Unit No: 1/2/3/4

Size: 1045 sqft

7/8/9/10

### AINTREE TOWER

MONZA TOWER

SEPANG TOWER

Unit No: 1/12

Size: 790 sqft

### SILVERSTONE TOWER

Unit No: 1/6

Size: 1495 sqft

Unit No: 2/3/4/5

Size: 1405 sqft

### PHEONIX TOWER

Unit No: 1 TO 12

Size: 920 sqft





18 MT. WIDE ROAD

30 MT. WIDE ROAD

SEMPANG

PHEONIX

SILVERSTONE

MONZA

AINTREE

VALENCIA

DETROIT

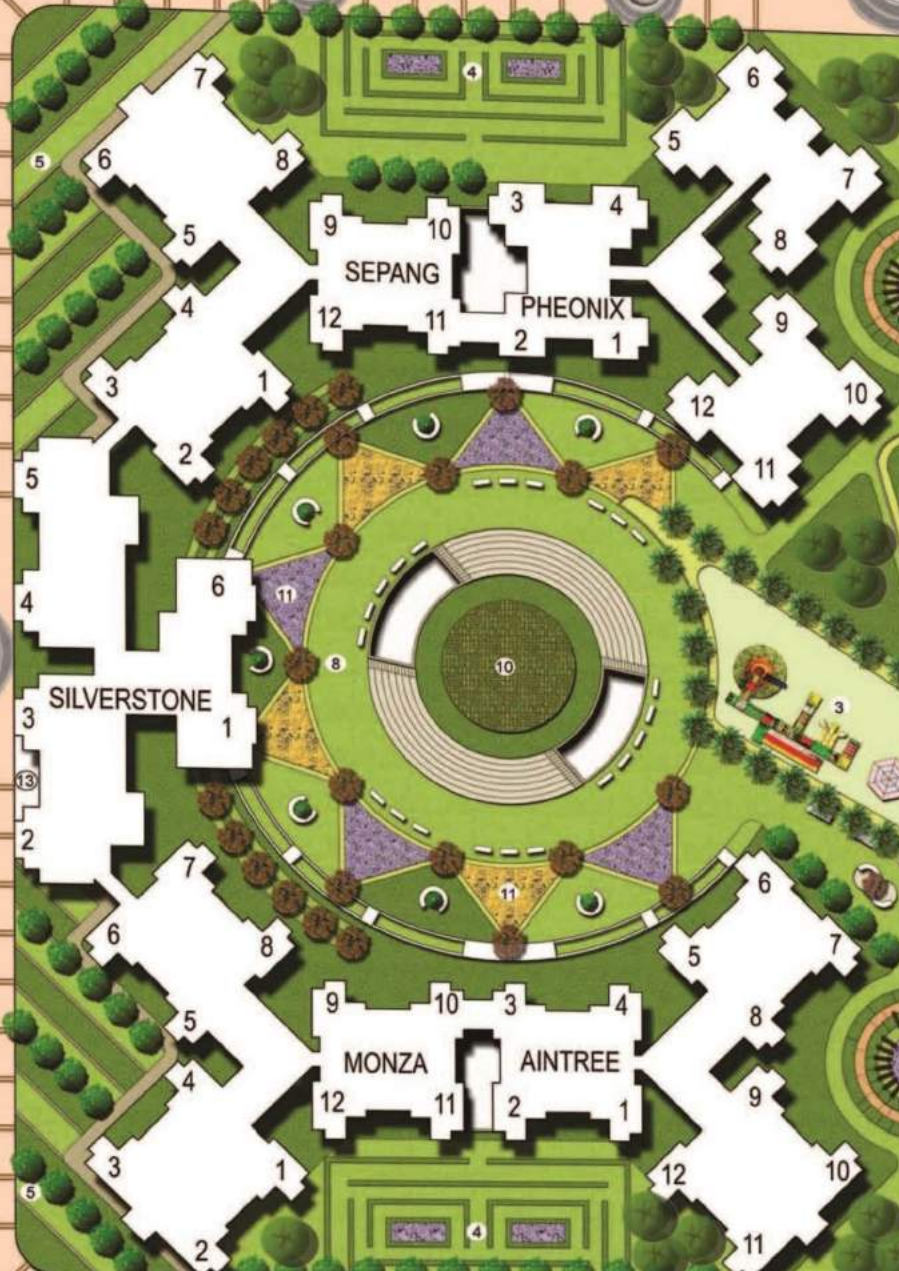
CAESARS

CLUB

KARTHIKEYAN

KARTHIKEYAN

PREMIO



## FUN FOR EVERYONE IN THE FAMILY



Grandstand is designed as a self-contained ecosystem that has all necessary amenities within the complex. The entire area has been thoughtfully designed to blend aesthetics with utility, taking into account the current and future needs of the

- Aroma Garden
- Kid's Play Area
- Neighbourhood space
- Swimming Pool
- Jogging Tracks
- Club House
- Amphitheatre
- Basketball Court
- Badminton Court
- Tennis Court
- Evening Garden
- Banquet Hall





Super Area: 1045 sq.ft  
 Covered Area: 774 sq.ft  
 Carpet Area: 703 sq.ft



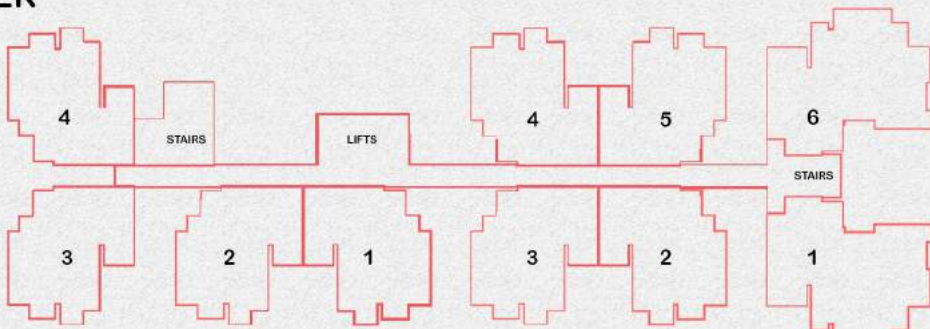
**2BHK + 2T (1045 SQ.FT)**  
 2 Bedrooms  
 Drawing/Dining  
 1 Kitchen + Utility Balcony  
 2 Toilets  
 3 Balconies

Super Area: 1405 sq.ft  
 Covered Area: 1042 sq.ft  
 Carpet Area: 938 sq.ft



**3BHK + 2T (1405 SQ.FT)**  
 3 Bedrooms  
 Drawing/Dining  
 1 Kitchen + Utility Balcony  
 2 Toilets  
 2 Balconies

**DETROIT TOWER**



Unit No: 1/2/3/4  
 Size: 1045 sqft

Unit No: 1/6  
 Unit No: 2/3/4/5  
 Size: 1405 sqft  
 Size: 1045 sqft

**CAESARS TOWER**

Disclaimer: while every attempt has been made to ensure the accuracy of the plans shown, all measurements, positioning, fixtures, fittings and any other data shown are approximate interpretation for illustrative purposes only and are not to scale. No responsibility is taken for any error, miss-statement or use of data shown. The company reserves the right to make changes in the plans, specifications, dimensions and elevations without any prior notice or obligation. 1 sq.mt = 10.764 sq.ft, 1 ft = 0.305 mt and 1 mt. = 3.28 ft.



Super Area: 1405 sq.ft  
 Covered Area: 1042 sq.ft  
 Carpet Area: 938 sq.ft

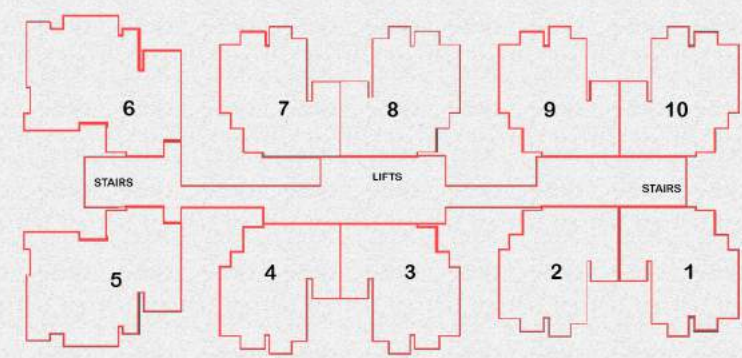
Super Area: 1405 sq.ft  
 Covered Area: 1042 sq.ft  
 Carpet Area: 938 sq.ft

**2BHK + 2T (1045 SQ.FT)**  
 2 Bedrooms  
 Drawing/Dining  
 1 Kitchen + Utility Balcony  
 2 Toilets  
 3 Balconies



**3BHK + 2T (1405 SQ.FT)**  
 3 Bedrooms  
 Drawing/Dining  
 1 Kitchen + Utility Balcony  
 2 Toilets  
 2 Balconies

**VALENCIA TOWER**



Unit No: 5/6      Size: 1405 sqft  
 Unit No: 1/2/3/4      Size: 1045 sqft  
 7/8/9/10



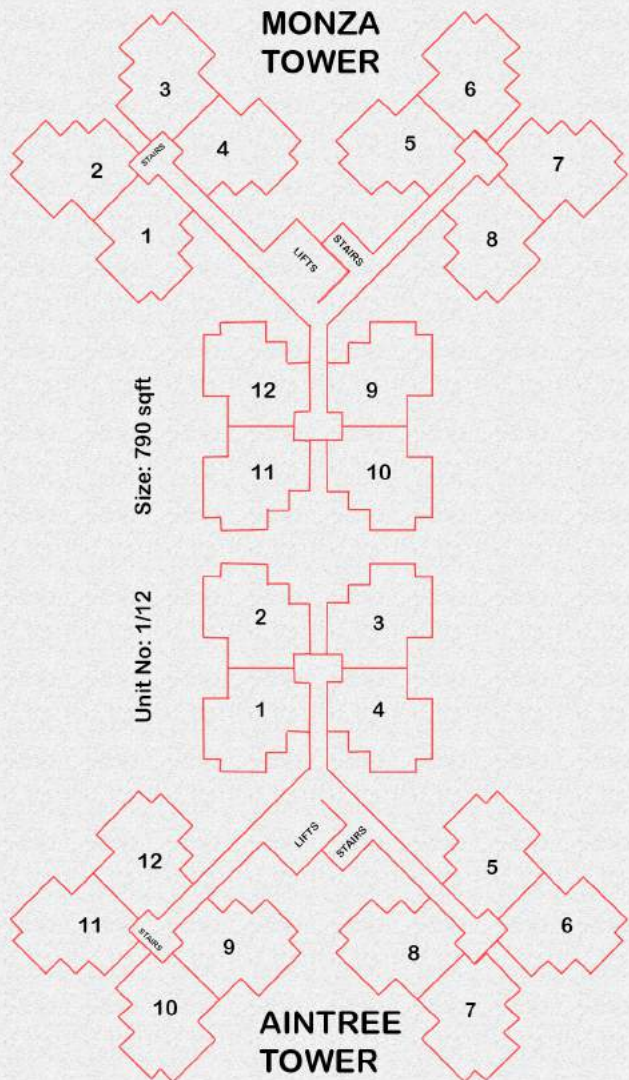
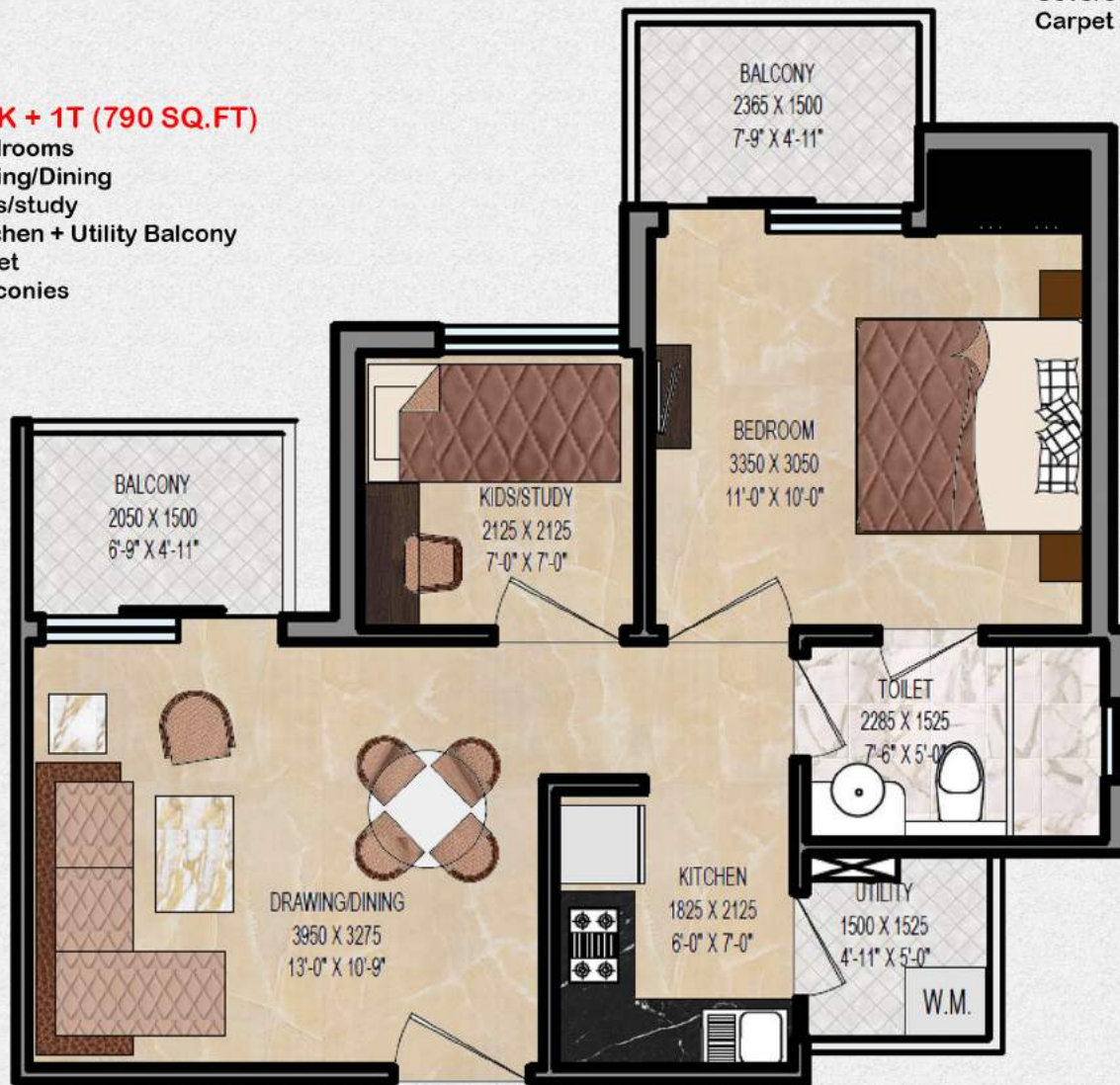
2,3,4 BHK & Penthouse, Yamuna Expressway

Disclaimer: while every attempt has been made to ensure the accuracy of the plans shown, all measurements, positioning, fixtures, fittings and any other data shown are approximate interpretation for illustrative purposes only and are not to scale. No responsibility is taken for any error, miss-statement or use of data shown. The company reserves the right to make changes in the plans, specifications, dimensions and elevations without any prior notice or obligation. 1 sq.mt = 10.764 sq.ft, 1 ft = 0.305 mt and 1 mt. = 3.28 ft.

Super Area: 790 sq.ft  
 Covered Area: 585 sq.ft  
 Carpet Area: 521 sq.ft

**2BHK + 1T (790 SQ.FT)**

- 1 Bedrooms
- Drawing/Dining
- 1 Kids/study
- 1 Kitchen + Utility Balcony
- 1 Toilet
- 2 Balconies

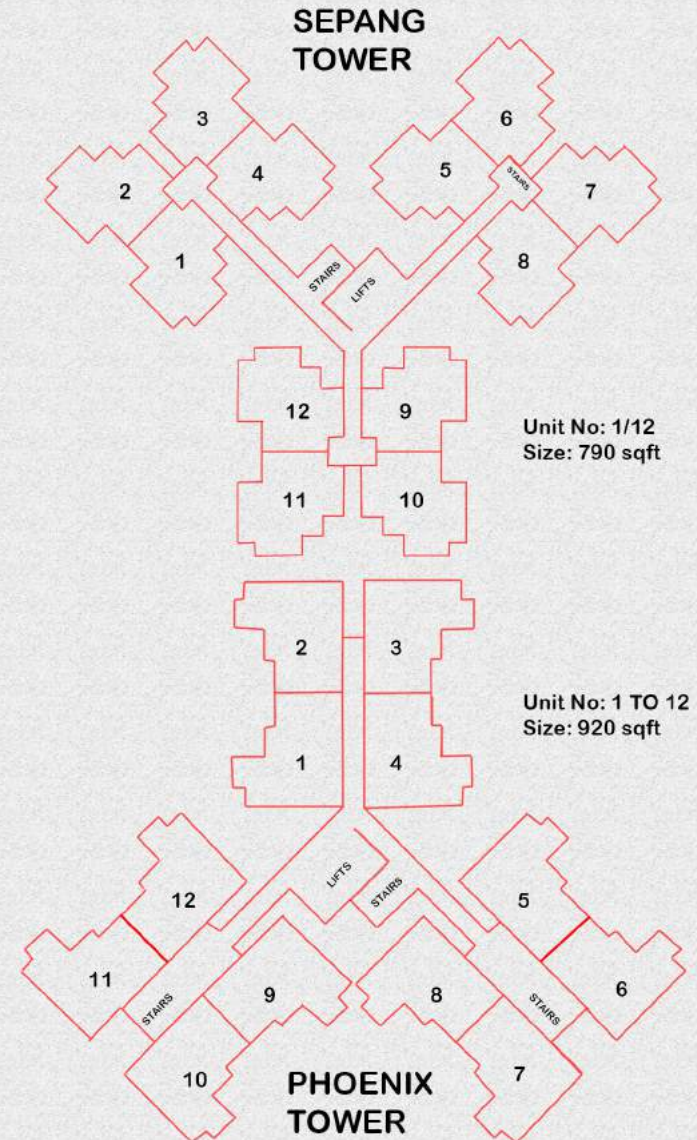


Disclaimer: while every attempt has been made to ensure the accuracy of the plans shown, all measurements, positioning, fixtures, fittings and any other data shown are approximate interpretation for illustrative purposes only and are not to scale. No responsibility is taken for any error, miss-statement or use of data shown. The company reserves the right to make changes in the plans, specifications, dimensions and elevations without any prior notice or obligation. 1 sq.mt = 10.764 sq.ft, 1 ft = 0.305 mt and 1 mt. = 3.28 ft.

Super Area: 920 sq.ft  
 Covered Area: 682 sq.ft  
 Carpet Area: 623 sq.ft



**2BHK + 2T (920 SQ.FT)**  
 2 Bedrooms  
 Drawing/Dining  
 1 Kitchen + Utility Balcony  
 2 Toilets  
 2 Balconies



Unit No: 1/12  
 Size: 790 sqft

Unit No: 1 TO 12  
 Size: 920 sqft



2,3,4 BHK & Penthouse, Yamuna Expressway

Disclaimer: while every attempt has been made to ensure the accuracy of the plans shown, all measurements, positioning, fixtures, fittings and any other data shown are approximate interpretation for illustrative purposes only and are not to scale. No responsibility is taken for any error, mis-statement or use of data shown. The company reserves the right to make changes in the plans, specifications, dimensions and elevations without any prior notice or obligation. 1 sq.mt = 10.764 sq.ft, 1 ft = 0.305 mt and 1 mt. = 3.28 ft.

**Super Area: 1495 sq.ft**  
**Covered Area: 1103 sq.ft**  
**Carpet Area: 1003 sq.ft**



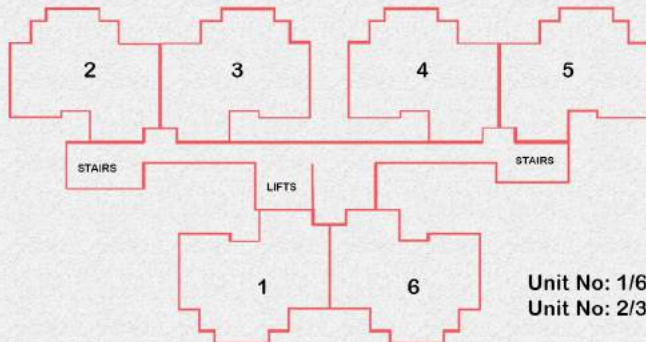
**3BHK + 3T (1495 SQ.FT)**  
**3 Bedrooms**  
**Drawing/Dining**  
**1 Kitchen + Utility Balcony**  
**3 Toilets**  
**2 Balconies**

**Super Area: 1405 sq.ft**  
**Covered Area: 1042 sq.ft**  
**Carpet Area: 938 sq.ft**



**3BHK + 2T (1405 SQ.FT)**  
**3 Bedrooms**  
**Drawing/Dining**  
**1 Kitchen + Utility Balcony**  
**2 Toilets**  
**2 Balconies**

**SILVERSTONE TOWER**



**Unit No: 1/6**      **Size: 1495 sqft**  
**Unit No: 2/3/4/5**      **Size: 1405 sqft**

Disclaimer: while every attempt has been made to ensure the accuracy of the plans shown, all measurements, positioning, fixtures, fittings and any other data shown are approximate interpretation for illustrative purposes only and are not to scale. No responsibility is taken for any error, miss-statement or use of data shown. The company reserves the right to make changes in the plans, specifications, dimensions and elevations without any prior notice or obligation. 1 sq.mt = 10.764 sq.ft, 1 ft = 0.305 mt and 1 mt. = 3.28 ft.

## RICH SPECIFICATIONS



### FINISHES

- Internal wall painted with pleasing shades of OBD
- Permanent weather coated heat reflective texture paint
- Glazed/Ceramic tiles upto 7ft height, wash basin, EWC
- Pre-polished granite platform with stainless steel sink, dado up to 2" height above platform glazed tiles in kitchen

### FLOORING

- Designer floor tiles in drawing and dining area
- Vitrified tiles in bedrooms
- Anti-skid ceramic tiles in toilets and balcony
- Marble/stone/tiles in corridors, staircase and lobbies

### FIRE FIGHTING

- Fire fighting arrangements as per norms

### DOORS AND WINDOWS

- Wooden door frames
- Pre-laminated flush doors/skin moulded shutters
- All external doors and windows of UPVC

### STRUCTURE

- Earthquake resistant R.C.C framed structure in accordance with the norms

### ELECTRICAL

- Modular switches and sockets
- Copper wiring

Disclaimer: while every attempt has been made to ensure the accuracy of the plans shown, all measurements, positioning, fixtures, fittings and any other data shown are approximate interpretation for illustrative purposes only and are not to scale. No responsibility is taken for any error, miss-statement or use of data shown. The company reserves the right to make changes in the plans, specifications, dimensions and elevations without any prior notice or obligation. 1 sq.mt = 10.764 sq.ft, 1 ft = 0.305 mt and 1 mt. = 3.28 ft.

**ACCESSIBILITY:  
THE DEFINING  
FACTOR !!**



**ELECTRIFYING  
INTERIORS THAT  
COMPLEMENT A  
LUXURIOUS  
LIFESTYLE !!**



**THE FONDEST  
MEMORIES ARE  
MADE WHEN  
GATHERED  
AROUND THE  
TABLE !!**





**MASTERFULLY  
DESIGNED FOR  
CONNOISSEURS  
OF CLASS !!**





**OASIS**  
**GrandStand**

2,3,4 BHK & Penthouse, Yamuna Expressway



## PROFESSIONALS BEHIND THE SCENE

Architect



Structure Consultant



Green Building Consultant



Landscaping Consultant



## OASIS BENCHMARKS :

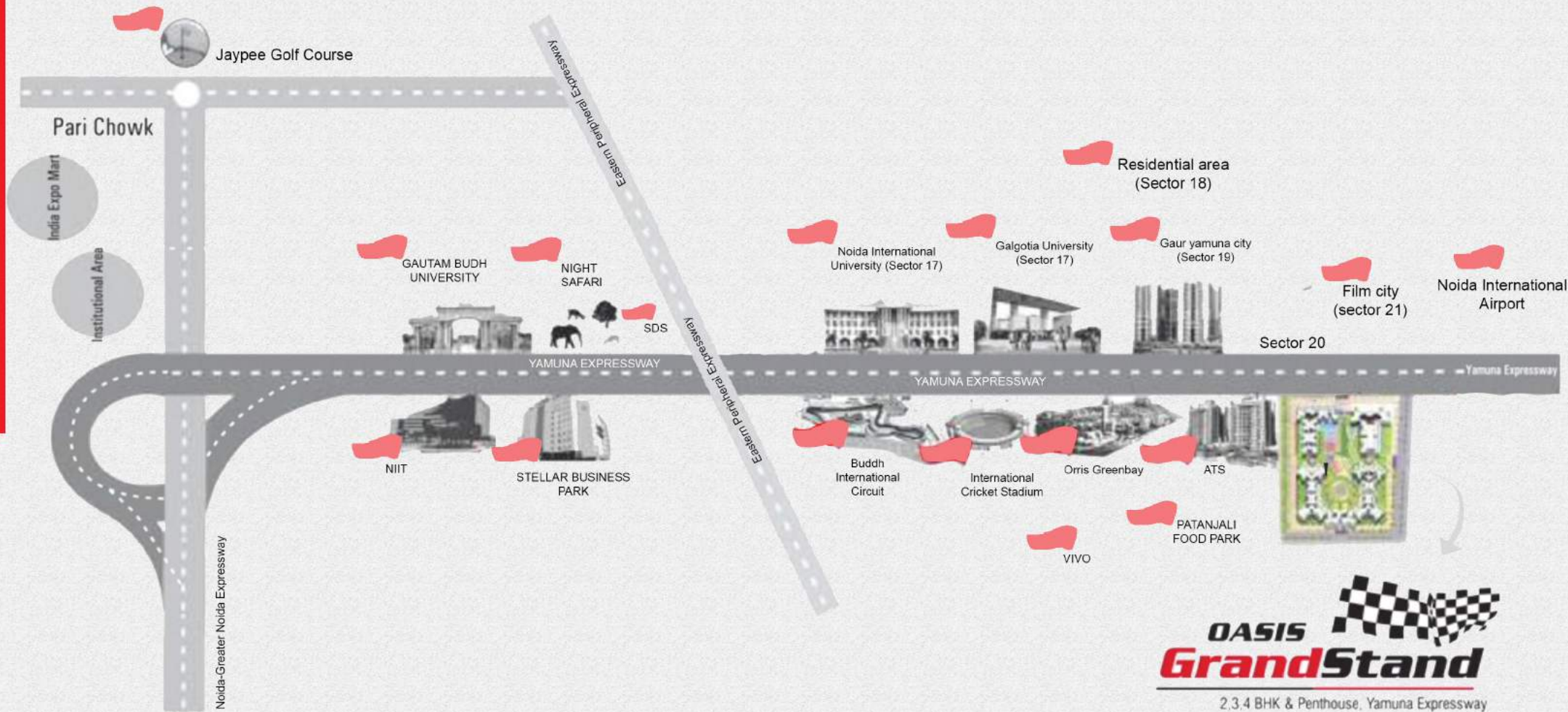
Delivered:



Ongoing:



# Excellent Connectivity



**Oasis Realtech Pvt. Ltd. (UPRERAPRM1696)**  
 Corporate Office: A-77, Sector 2, Noida (U.P.), India  
 T: 0120 411901, 8010-111-777 E: info@oasis.in W: www.oasis.in  
 Site: GH-01, TS 01B, Sector 22D, Yamuna Expressway, G.B Nagar(UP), India  
 Project RERA NO: UPRERAPRJ6908 (PHASE 1)

**PROJECT FUNDED BY:  
 SWAMIH INVESTMENT FUND I**